



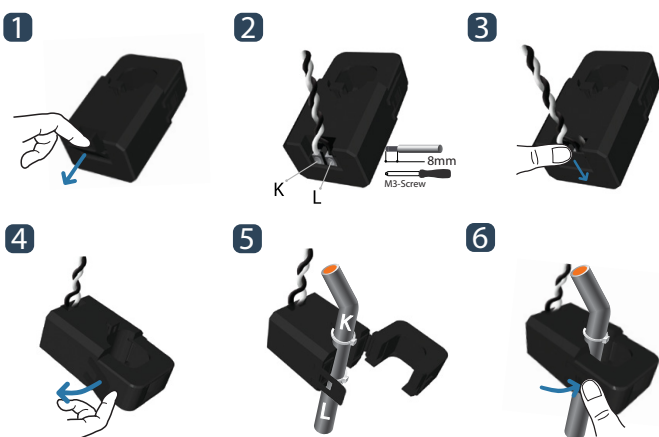
Split-core Current Transformer

CE

RoHS
Progress & Testing Laboratory

JSXXS-XXX-5A Series

How to use >>> 1



JS series of split-core current transformer offers 5A at secondary from sensed primary current for metering application. It can be used for power meter, distribution system, control panels, switchgear and other equipment. It is designed to install to live power line without disconnection as split-core compact type. Also, over-voltage protection circuit is included to offer safe, fast and cost effective installation.

Applications

- Power meter
- Switchgear
- Distributed measurement systems
- General Sets
- Control panels

Benefits

- Small-size, light-weight
- Simple Installation
- Over-Voltage protection circuit is installed.

Features

- PC spring, output-terminal, secure locking hinge, one-touch structure make easy to install to the existent equipments such as a power distribution boards.
- Isolated plastic case recognized according to UL94-V0
- UL / EN 61010 - 1 certified

Notice

- Core contact surface is waterproofed, however if it gets rusty, you could reuse after removing rusts with spraying WD-40 or CRC5-56 on the rusted side
- Customizing output lead wire

Specification

Accuracy	Class 0.5 / 1.0 / 3.0
Output Terminals	2 X M3-Screw, with Terminals cover
System Voltage	720V(0.72kV)
Overload withstand	1.2 times rated current continuously
Compliant with	IEC/EN60044-1 & IEC61010-1
Operating Temperature Range	-20°C to 55°C
Relative Humidity	0-85% non-condensing
Test Voltage	3kV for 1 minute
Frequency Range	50/60Hz
Protection Level	Bipolar 6.5Vp
Installation Category	CAT II or CAT III 600VAC



How to Order / Model Reference

eg **J S 1 7 S** - 0 0 0 / 0 A

Model	J S 1 7 S
Primary Current	Select code from ratio table above
Secondary Current	5 A

Current Transformer Ratios

Primary Current	Burden			
A	cl. 0.5 VA	cl. 1 VA	cl. 3 VA	Code
150			1.5	150

5A Secondary

Accuracy conforms to IEC 60044-1,
meets the measuring range from 5 to 120 % of In

How to Order / Model Reference

eg **J S 2 4 S** - 0 0 0 / 0 A

Model	J S 2 4 S
Primary Current	Select code from ratio table above
Secondary Current	5 A

Current Transformer Ratios

Primary Current	Burden			
A	cl. 0.5 VA	cl. 1 VA	cl. 3 VA	Code
100			1.5	100
150			1.5	150
200		0.5		200
250		0.5		250
300		0.5		300
400		0.5		400

5A Secondary

Accuracy conforms to IEC 60044-1,
meets the measuring range from 5 to 120 % of In

How to Order / Model Reference

eg **J S 3 6 S** - 0 0 0 / 0 A

Model	J S 3 6 S
Primary Current	Select code from ratio table above
Secondary Current	5 A

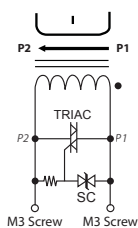
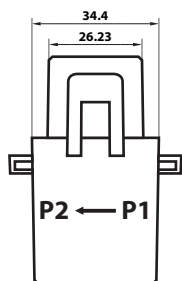
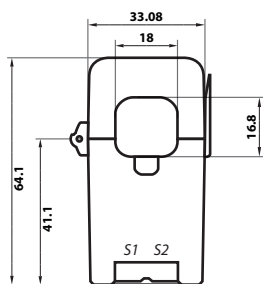
Current Transformer Ratios

Primary Current	Burden			
A	cl. 0.5 VA	cl. 1 VA	cl. 3 VA	Code
200			2.5	200
250		0.5		250
300		0.5		300
400	0.5	2.5		400
500	0.5	2.5		500
600	0.5	5.0		600

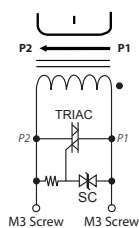
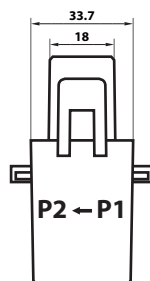
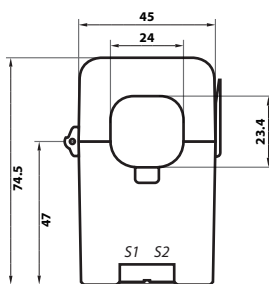
5A Secondary

Accuracy conforms to IEC 60044-1,
meets the measuring range from 5 to 120 % of In

Dimensions



Dimensions



Dimensions

